



Access™ laboratory workstation



Access laboratory workstation

Small scale automation with large scale results

The Echo® liquid handler continues to revolutionize liquid handling using acoustic liquid transfer to improve assay results and dramatically reduce life science research costs. The Access workstation further maximizes the benefits of the Echo platform by improving overall assay throughput and reproducibility with automation. Incorporating the same easy-to-use Labcyte automation control software developed for the larger scale POD™ automation platform, the Access workstation is the quickest path to walk-up automation for Echo liquid handlers in a bench top environment. In true plug-n-play fashion, protocols developed using the Echo® software applications for cherry picking, dose-response, plate reformatting, and more are instantly incorporated into automation routines. In a matter of minutes, the Echo liquid handler is converted into a fully automated liquid handling system ready for walk-up use.

Easily add automation to the Echo platform

- Arrives fully optimized, never re-teach or fine-tune system settings
- Experience true ease-of-use with graphical, wizard-based software
- Import Echo application protocols directly into automation routines
- Configure to meet a wide range of application requirements
- Communicate with LIMS and database systems
- Use safely in chemical and biological environments



The Access workstation is the fastest way to maximize the power of the Echo liquid handler

Echo Liquid Handler

Accessory Options

- Barcode reader
- De-lid station
- Insert station

Integration Options

- Sealer
- Centrifuge
- Bulk dispenser

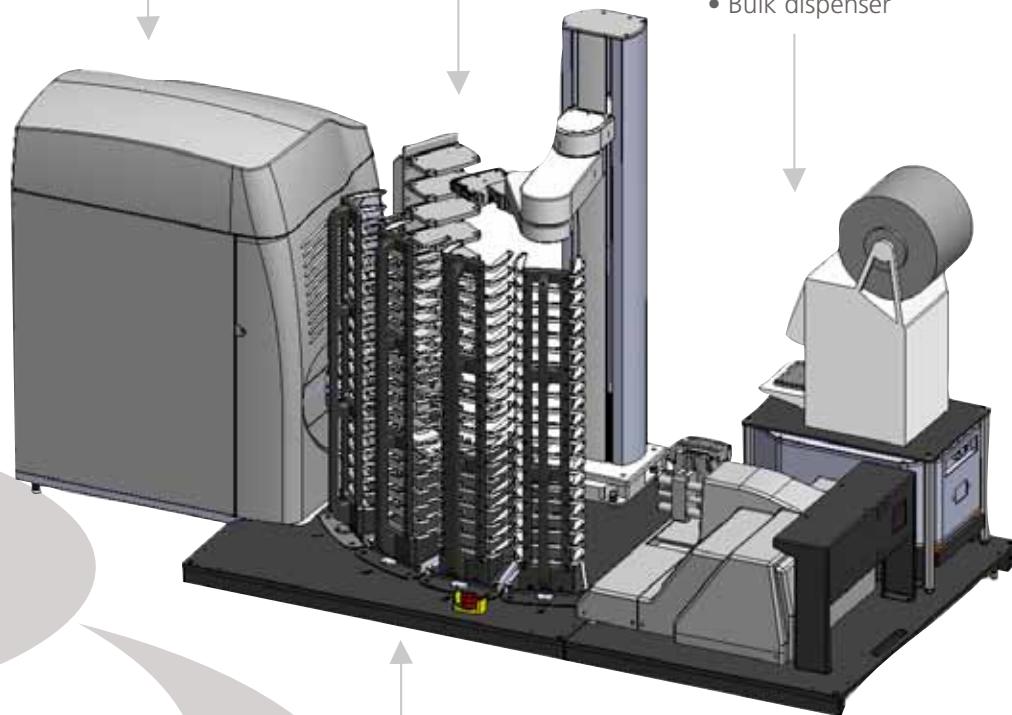


Plate Storage Options

- 50-Plate stacks
- 20-Plate random-access racks (mix and match up to 4)

Also Includes:

- System computer
- Utility/Communications hub
- Emergency system stop
- Safety enclosures

Automation with just a click

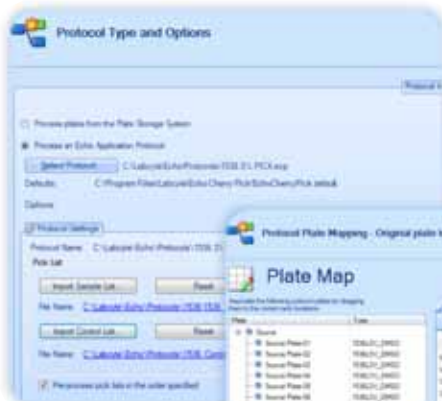
Labcyte automation control and Echo® software applications working together

The application-driven Labcyte automation control software allows the Access and POD systems to automatically create optimized automation routines using direct input from Echo application protocols. From a single interface on the system computer or from an offline client, users can create and edit protocols to add to the run scheduler. Automation routines can be scheduled while the system is running or in advance. With Labcyte automation control, any changes to Echo application protocols are immediately recognized by the system software and any linked automation routines are automatically updated. If automatic adjustments are not enough, the system software will guide users to use tools like the plate storage control to resolve any conflicts. If an error occurs, the Access and POD systems have guided error recovery allowing users to continue protocols quickly and easily. With Labcyte automation control and Echo software applications working together, automation routines are optimized to ensure the greatest possible throughput for the Echo liquid handler.

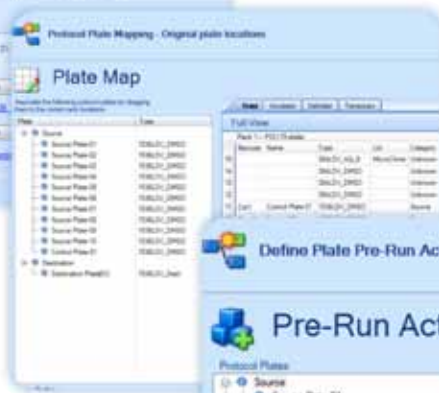


Labcyte automation control offers true ease-of-use and efficiency to maximize the power of the Echo liquid handler

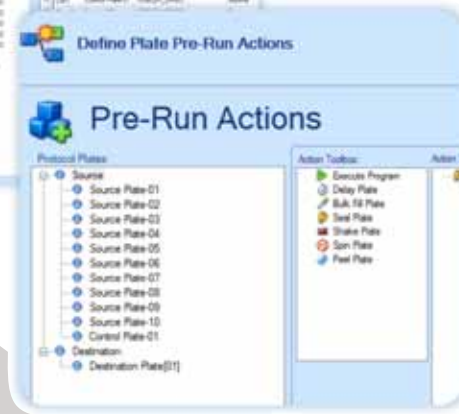
Guided setup of automation routines



Import Echo application protocol and corresponding pick lists



Map protocol plate maps to physical plate inventory



Assign pre-run and post-run plate handling tasks

Dynamic flexibility

After stepping through the guided setup of an automation routine, users can schedule the run to start as soon as possible or at a specific date and time. If changes to the schedule are needed, runs can be re-prioritized on-the-fly. If protocol requirements change, users can step back through the guided setup to make any adjustments.

Labcyte automation advantages

Eliminate the drawbacks of custom automation

Approaches to laboratory automation using custom configurations often compromise overall usability and are unnecessarily complex. From a single interface, the Access workstation combines flexible Echo software applications with efficient scheduling of Echo liquid handling actions to achieve the highest level of performance. Echo software applications guide researchers through a wide range of options, eliminating the need to compromise application requirements for the convenience of automation. As options are selected or edited, graphical plate maps are instantly updated with the resulting layouts. This instant feedback quickly and visually confirms that every protocol will provide high-quality results as fast as possible.

Echo Plate Reformat

- Map transfers from any well to any well
- Graphically design complex plate maps for assay assembly or DOE

Echo Cherry Pick

- Easily import pick lists
- Create custom output files

Echo Dose Response

- Select hits and generate curves with a single protocol and pick list
- Eliminate the need for additional replicates
- Reduce false negatives from dose response
- Use less stock sample

**“It’s so easy any of our walk-up users
can start running protocols right away”**



Quickly address your automation needs with revolutionary performance and ease. The Access workstation arrives optimized for any Echo liquid handler and ready to take full advantage of the Echo software applications.

- ✓ Directly import all Echo application protocols
- ✓ Use all Echo® qualified plates and lids
- ✓ Interchange random-access and stacked-plate racks
- ✓ Create protocols on-the-fly or from a remote client
- ✓ Automatically inventory plates and verify barcodes
- ✓ Recover quickly from unexpected errors
- ✓ Add devices when needed
- ✓ Use immediately after installation
- ✓ Receive all support directly from Labcyte
- ✓ Meet CE/TUV standards



www.labcyte.com

